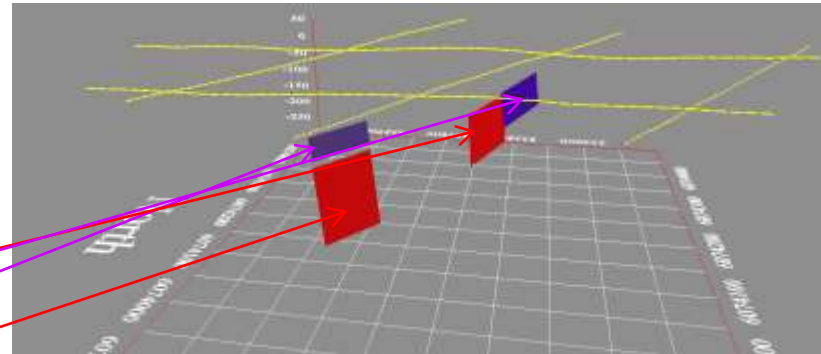
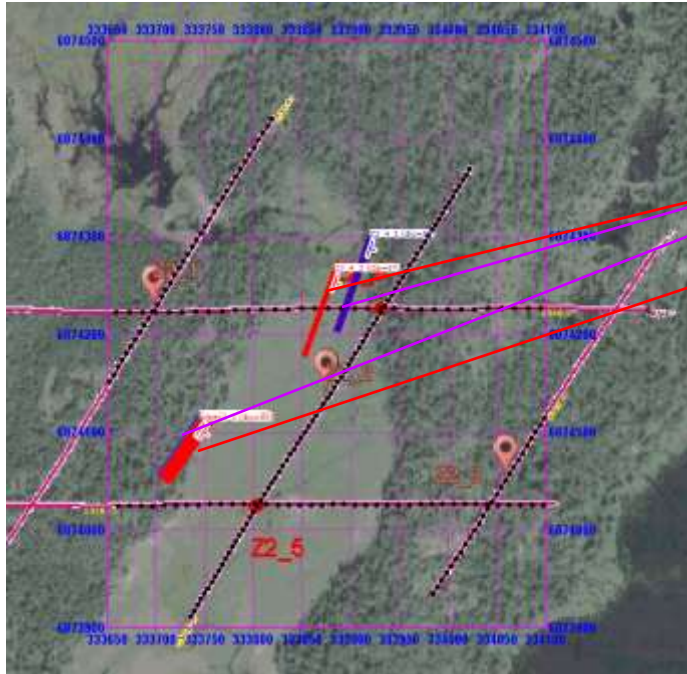


The Z2 Picks – The model

We will now attempt to describe and present our best model to date.



View of model from South

Conductor Z2_4_shallow

Strike: 110m
 Dip Extent: 80m
 Strike Angle: 20°
 Dip Angle: 85° E
 Conductance: 30S
 Depth to Top: 30m
 Position: (333900E, 6074256N)

Conductor Z2_4_deep

Strike: 100m
 Dip Extent: 120m
 Strike Angle: 20°
 Dip Angle: 87° E
 Conductance: 200S
 Depth to Top: 120m
 Position: (333866E, 607226N)

Conductor Z2_5_shallow

Strike: 80m
 Dip Extent: 50m
 Strike Angle: 35°
 Dip Angle: 85° E
 Conductance: 65S
 Depth to Top: 55m
 Position: (333722E, 6074090N)

Conductor Z2_5_deep

Strike: 80m
 Dip Extent: 170m
 Strike Angle: 35°
 Dip Angle: 85° E
 Conductance: 200S
 Depth to Top: 120m
 Position: (333725E, 6074088N)

The 4 parts of the model are shown. The two shallow, weaker conductors in purple and the 2 deeper, more conducting targets in red.